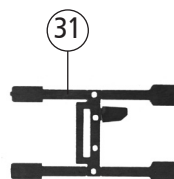
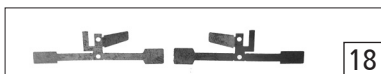
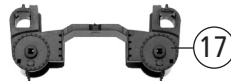
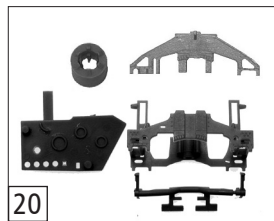
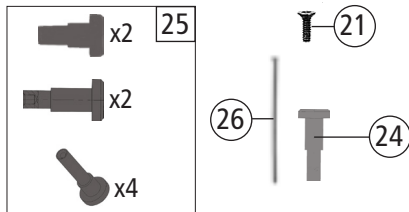
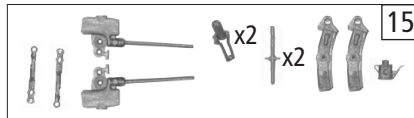
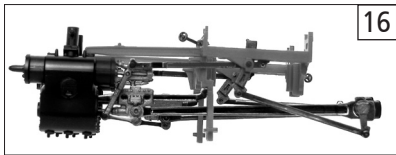
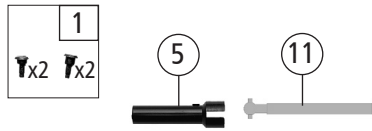
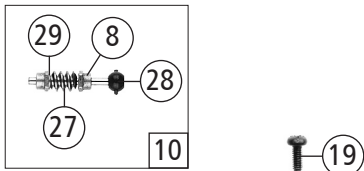
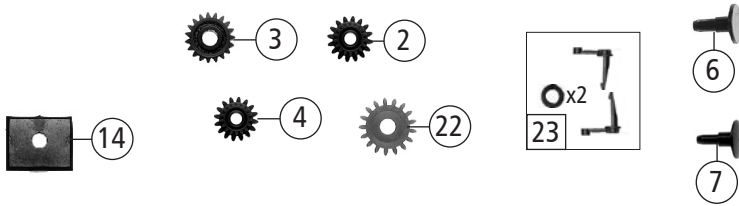
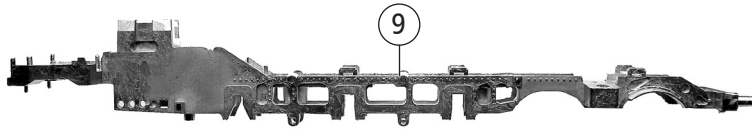
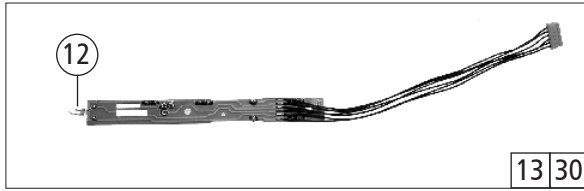
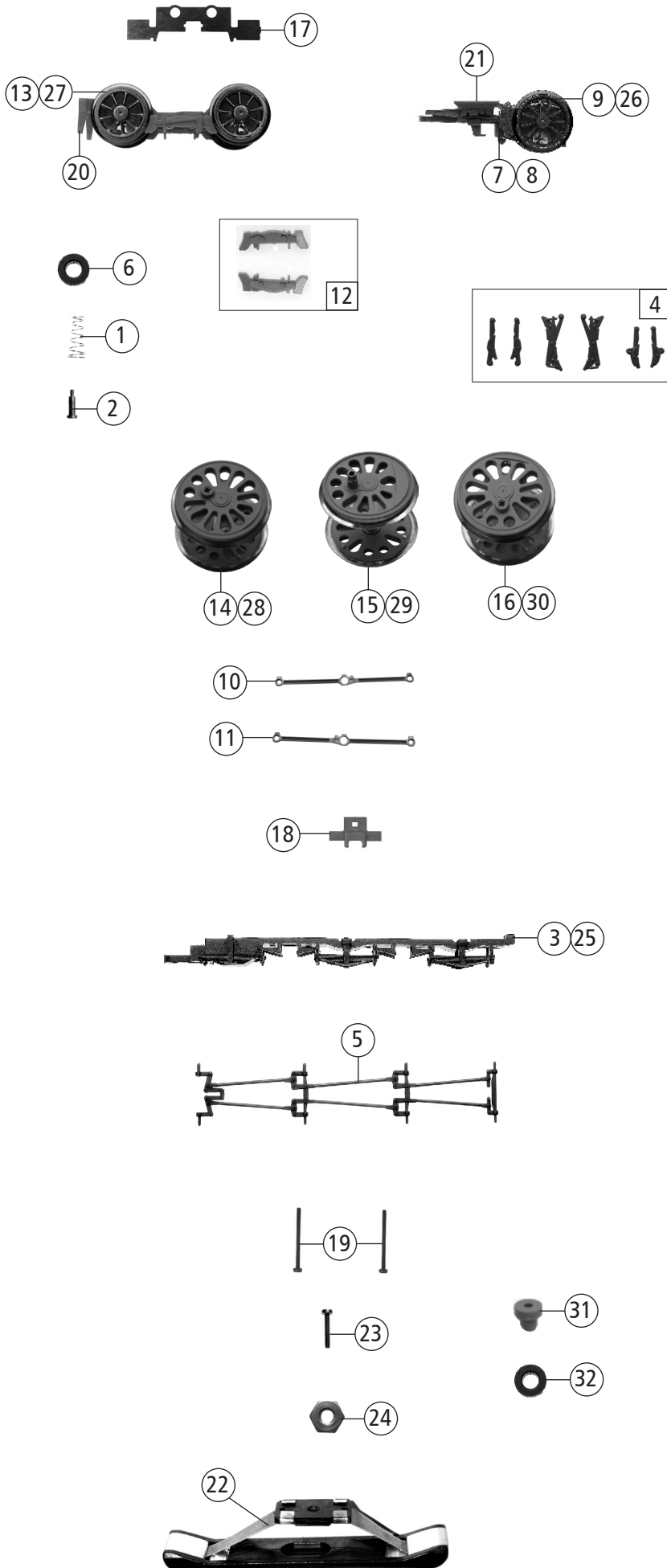


71267	DR	BR 01.5	=	
71268			=	🔊
79268			~	🔊

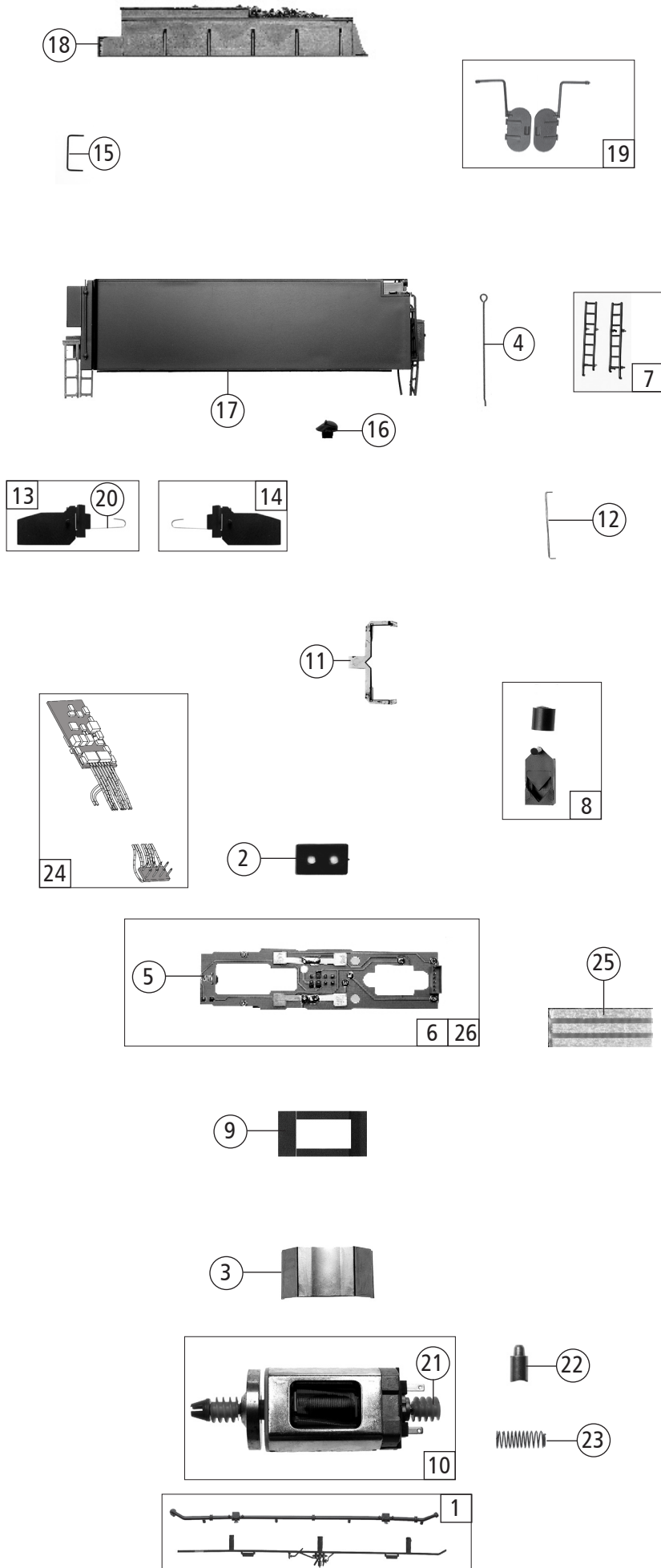
Pos. Nr. Pos.no.	Beschreibung Description	Art.-Nr. Art.no.	Preisgruppe Price bracket
1	Kessel komplett Betr. Nr. 01 508 Boiler compl.Loco No. 01 508	149019	38
2	Nummerschild Number plate	149017	3
3	Schaltstange Control rod	100170	4
4	Treppe li.+re. Stairs L+R	105940	4
5	Dachfenstergitter Roof window grid	109496	6
6	Lokpfeife Signal-horn	108274	6
7	TS-Umlauf Part set running board	115531	10
8	Kabelhalter + Steuerungshandrad Cable support and control handwheel	138193	6
9	Teilesatz Kesselunterteil Parts set boiler bottom part	114191	12
10	Kesselunterteil-Lichtabdeckungssatz Parts set boiler bottom part-light barrier	114200	6
11	TS-Fenster+Lichtleiter Part set-window+light conductor	115548	9
12	TS-Kessel+Seuthekontaktalter Parts set-Boiler+contact holder	114203	7
13	Kessel und Ventilleitungssatz 1 Set boiler and valve line 1	114204	8
14	Teilesatz Kessel Parts set boiler	114205	9
15	Steuerstangensatz Parts set control rod	114206	12
16	Kesselgewicht Boiler weight	114207	8
17	Lichtabdeckung komplett Light cover assembly compl.	115532	12
18	TS 2 - Kesselleitung, Ventil, Part set 2 - Boiler pipes, valve,	114212	9
19	GF-Schraube M 2x6 mm GF-Screw	114828	3
20	Aschenkastensatz Ash pan	115545	5
21	Teilesatz Kessel Parts set boiler	115546	5
22	Umlaufblech Running board	149021	19
23	Leitungsgitter Pipeline grid	147020	8
24	Führerhaus Driver's cab	149020	20
Sound			
25	Lautsprecher Loud speaker	129524	13
26	Schallkörper Loudspeaker box	132058	6
27	Lautsprecherhaltebügel Loudspeaker holder	131214	5



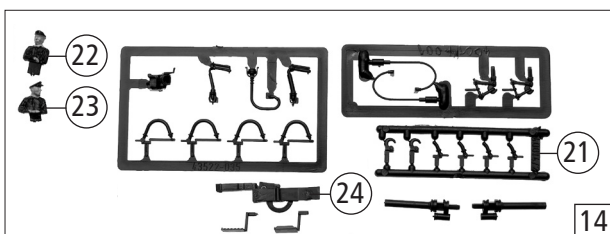
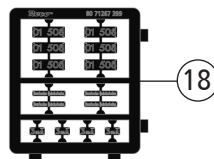
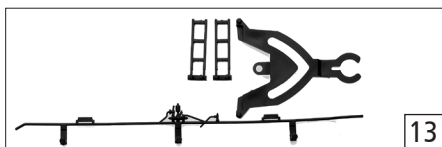
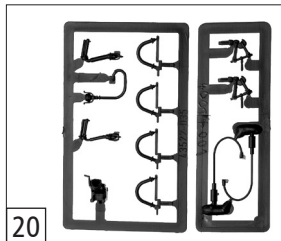
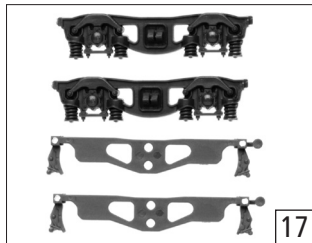
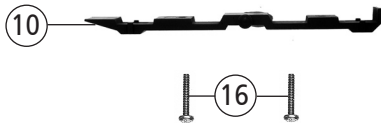
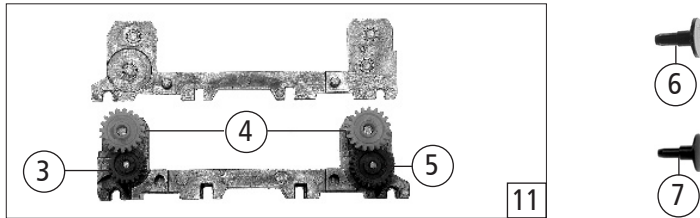
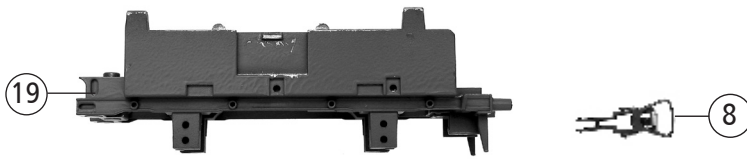
Pos. Nr. Pos.no.	Beschreibung Description	Art.-Nr. Art.no.	Preisgruppe Price bracket
71267	DR BR 01.5	=	
71268		=	🔊
79268		~	🔊
1	TS - Steuerungbolzen Parts set - Reversing gear bolts	137522	6
2	Zahnrad Z=19/M-0,4 Gear	86417	3
3	Zahnrad Z=17/0,4G Gear	86418	5
4	Schneckenzahnrad Worm gear	86490	5
5	Kardanhülse Cardan bearing	87074	5
6	Puffer flach Buffer flat	88502	5
7	Puffer gewölbt Buffer vaulted	88503	5
8	Lager für Schneckenachse Bearing for worm axle	89749	6
9	Grundrahmen Base frame	149015	16
10	Schneckensatz Worm set	100132	13
11	Kardanwelle Cardan shaft	106216	5
12	Drahtlampe 16 V Light bulb	109321	8
13	Lokplatine kpl. Boiler printed circuit assenly	111776	20
14	Schneckenkammerdeckel Worm cover	111987	4
15	TS - Steuerung Part set - Reversing gear	146567	12
16	Steuerung kpl. Reversing gear compl.	147012	36
17	Zylinderblock Cylinder block	114185	12
18	Radkontaktsatz Wheel contact set	114192	6
19	GF-Schraube M2x8 mm GF-Screw	114923	3
20	Teilesatz Kesselfahrwerk Parts set boiler chassis	115539	6
21	SK-Schraube M2x4 mm SK-Screw	115541	3
22	Zahnrad Z=16 Gear	117617	3
23	TS-Steuerung Part set reversing gear	117445	5
24	Niet langer ansatz 3,2 mm Rivet long	117446	3
25	Steuerungsnieten kurz+lang Steering ass. rivets short+long	113252	8
26	Drahtstift Tack	110641	4
27	Schnecke Wormgear	86720	6
28	Kardankugel Cardan ball	95797	3
29	Beilagscheibe Washer	86108	3
AC-Wechselstrom			
30	Lokplatine kpl. Printed circuit assembly for loco	111831	21
31	Radkontakt Wheel contact	114217	4



Pos. Nr. Pos.no.	Beschreibung Description	Art.-Nr. Art.no.	Preisgruppe Price bracket
71267	DR BR 01.5	=	
71268		=	🔊
79268		~	🔊
1	Druckfeder Spring	86271	4
2	Ansatzschraube M2x8 mm Flanged screw	100101	4
3	Lokboden Loco bottom	105938	12
4	Bremsbackensatz Set of brake shoes	105939	12
5	Bremsgestänge Brake rod	105945	7
6	Scheibe Plate	105969	3
7	Bremsbacke links Brake shoes left side	106037	4
8	Bremsbacke rechts Brake shoes right side	106038	4
9	Nachlaufwheelsatz Carrying wheelset (rear)	137527	10
10	Kuppelstange links Connecting rod left	111769	7
11	Kuppelstange rechts Connecting rod right	111770	7
12	Bremsbackensatz Vorlaufgestell Set of brake shoes f. pilot frame	111828	6
13	Vorlaufwheelsatz Carrying wheelset (front)	137525	10
14	Kuppelwheelsatz Coupling wheelset	115536	12
15	Treibwheelsatz Driving wheelset	115537	12
16	Kuppelwheelsatz mit Zahnrad Coupling wheelset with Gear	115538	12
17	Vorlaufwheelsatzkontakt Carrying wheel contact (front)	116851	3
18	Kabelführung Cable wheelset	114389	3
19	GF - Schraube M2x25 mm GF - Screw	115533	3
20	Vorlaufgestell Carrying wheels frame(front)	115551	3
21	Nachlaufgestell Carrying wheels frame(rear)	115552	3
AC-Wechselstrom			
22	Schleifer Slider	86033	14
23	Schraube M 1,6x10 mm Screw	85699	3
24	Sechsk. Mutter A M1,6 mm Hexagonal nut	86004	3
25	Lokboden Loco bottom	106204	12
26	Nachlaufwheelsatz Carrying wheelset (rear)	108313	9
27	Vorlaufwheelsatz Carrying wheelset (front)	112108	9
28	Kuppelwheelsatz Coupling wheelset	115557	12
29	Treibwheelsatz Driving wheelset	115558	12
30	Kuppelwheelsatz mit Zahnrad Coupling wheelset with Gear	115559	12
31	Stoppel Plug	114977	3
32	Scheibe MS 4,7x2,2x0,2 Washer	112681	3



Pos. Nr. Pos.no.	Beschreibung Description	Art.-Nr. Art.no.	Preisgruppe Price bracket
71267	DR BR 01.5	=	
71268		=	🔊
79268		~	🔊
1	Tenderleitungssatz Tender pipe set	114666	6
2	Brückenstecker Jumper	100644	6
3	Motorspange Clip for the motor	108264	3
4	Tendergriffstange Handle bar tender	108591	4
5	Drahtlampe 16V Light bulb 16V	109321	8
6	Tenderplatine kpl. Printed circuit assembly for Tender	111786	23
7	Heckleitersatz Ladderset, rear	111805	6
8	Platinenhalter+Tenderkupplung PCB holder+tender coupling	111829	6
9	Modulhalter Module holder	111877	3
10	Motor Motor	113197	28
11	Lichtleiter Tender Light transmission tender	113204	4
12	Griff Handle	116871	3
13	Tendertüre li. kpl. Tender door assembly left	114195	7
14	Tendertüre re. kpl. Tender door assembly right	114196	7
15	Griffstange kurz Handle bar short	114210	4
16	Einfüllstutzen Fill up pipe	116870	3
17	Tendergehäuse Tender body	149016	16
18	Kohleaufsatz Coal stack frame	133507	12
19	Wasserklappe links und rechts Water hatch left and right	120293	5
20	Tendertürfeder Spring tender door	115554	3
21	Schnecke Wormgear	86704	6
22	Kohlebürste Carbon brush	89743	6
23	Bürstenfeder Carbon brush spring	114197	3
Sound			
24	Sounddecoder Hen. So. Sounddecoder	148423	39
25	Leiterplatte PCB	131427	5
AC-Wechselstrom			
26	Tenderplatine Tender contact plate	111839	24



71267	DR	BR 01.5	=	
71268			=	🔊
79268			~	🔊

Pos. Nr. Pos.no.	Beschreibung Description	Art.-Nr. Art.no.	Preisgruppe Price bracket
1	Hafrings.10Stk.10,3-12,8mm Traction tires set	40069	---
2	Zugfeder Spring	86208	3
3	Zahnrad Z=21 Gear	86414	3
4	Schneckenzahnrad doppelt Gear double	86419	6
5	Zahnrad Z=24 Gear	86516	3
6	Puffer flach Buffer flat	88502	5
7	Puffer gewölbt Buffer vaulted	88503	5
8	Standardkupplung Standard coupling	89246	6
9	Radsatz ohne Zahnrad Wheelset without gear	121877	9
10	Getriebeboden Gear bottom	108263	9
11	Getriebesatz ohne Zahnradern Gear set without gears	108262	11
12	Radsatz mit 2 Hafringen Wheelset with 2 traction tires	108265	12
13	TS-Tender Parts set-Tender	111767	6
14	Zurüstbeutel Bag with accessories	114183	14
15	Universalkupplung Universal coupling	89282	6
16	GF-Schraube M 2x10 mm GF - Screw	114854	3
17	Blenden+Bremsbackensatz Bogie frame+set of brake shoes	117467	5
18	Tafelsatz Set of panels	149022	12
19	Tendergrundrahmen Tender base frame	149018	14
20	Zubehörrahmensatz Set of accesorie frames	108322	7
21	Attrappenrahmen klein Small dummy frame	107808	4
22	Heizer Engine man	89725	6
23	Lokführer Loco driver	89724	6
24	Kurzkupplung Vorenkupplung Short coupling preuncoupling	115550	6
AC-Wechselstrom			
25	Hafrings.10Stk. 10,3-12,4mm Traction tires set	40074	---
26	Tenderradsatz Wheelset Tender	108304	10
27	Radsatz mit Hfafringen Wheelset with 2 tractions tires	108305	12